



## LONDON COURT, BRENTWOOD, CM14

### £1,500 PCM

**LET**

One Bedroom Apartment | Gated Development | 700 Sq Ft Internally (Approx.) | Furnished | High Vaulted Ceilings | Large Windows | Open Plan Reception | Integrated Kitchen | Modern Bathroom | Built-In Wardrobes | One Allocated Parking Space

Located within the highly popular and gated Galleries development is this stunning one bedroom first floor apartment.

As you enter the apartment there is an L-shaped entrance hall with ample storage and double doors that lead to the open plan reception room which features triple aspect windows, vaulted ceilings and an integrated kitchen. The master bedroom features a vaulted ceiling and built-in wardrobes. Finally, there is a modern three piece family bathroom.

The apartment boasts approximately 700 sq. ft of internal living space and the high ceilings and large windows provides the property with spacious living and an abundance of natural light.

There is also one allocated parking space.

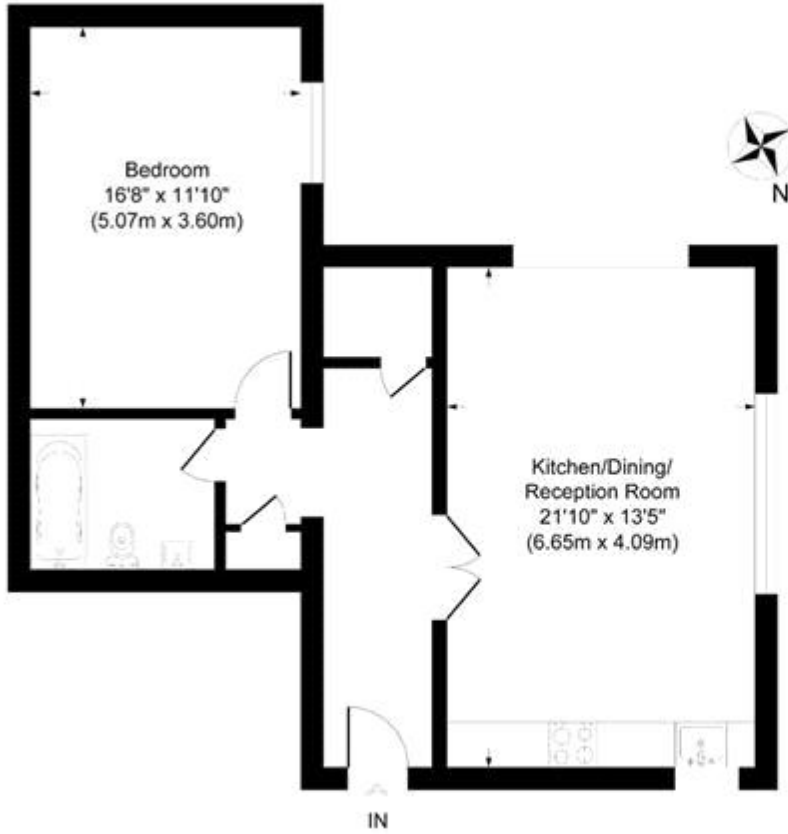
London Court is situated approximately 0.6 miles of Brentwood's Mainline Railway Station which provides access to the Elizabeth line.

Deposit: £1,846.15

Holding Deposit: £369.23



LONDON COURT, BRENTWOOD, CM14  
£1,500 PCM



## London Court The Galleries

Approximate Gross Internal Area  
Total = 65.3 sq m / 703 sq ft

This plan is for layout guidance only. Not drawn to scale unless stated. Windows and door openings are approximate. Whilst every care is taken in the preparation of this plan, please check all dimensions, shapes and compass bearings before making any decisions reliant upon them.

powered by  
**THE360IMAGE**  
[www.the360image.co.uk](http://www.the360image.co.uk)

