



## HARSTON WALK, BOW, E3

### £1,700 PCM

Finished to an excellent standard is this stunning one bedroom apartment. Offered furnished, the property is on the fourth floor and comprises entrance hall, open plan reception room with fully fitted kitchen and private balcony, double bedroom with ample storage and modern family bathroom.

**LET AGREED**

- 24 hour concierge
- Close to local transport links
- Furnished
- Gym
- Modern development
- One bathroom
- One bedroom
- Private balcony

Finished to an excellent standard is this stunning one bedroom apartment. Offered furnished, the property is on the fourth floor and comprises entrance hall, open plan reception room with fully fitted kitchen and private balcony, double bedroom with ample storage and modern family bathroom.

There is Herringbone flooring in the hallway and living area and the bedroom is carpeted.

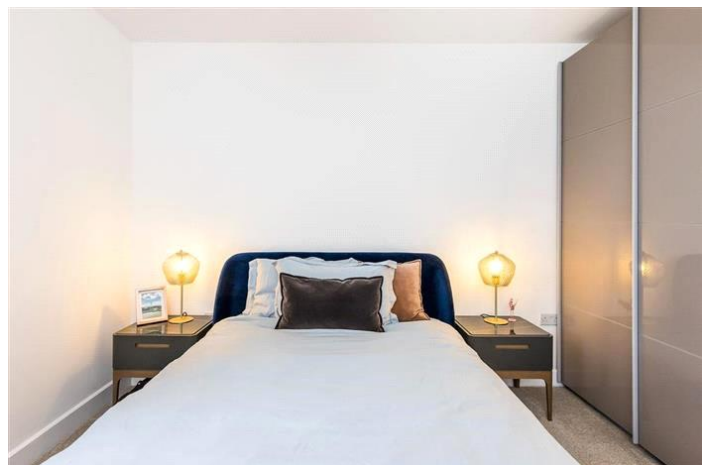
Please note some of the furnishings seen in the photos will be replaced.

Harston Walk forms part of the popular St Andrews development and features of this include a 24 hour concierge and residents gym.

Bromley-by-Bow station (District & Hammersmith & City line) is on the doorstep and Devons Road DLR station is also within a very short walk away.

Holding Deposit: £392.30

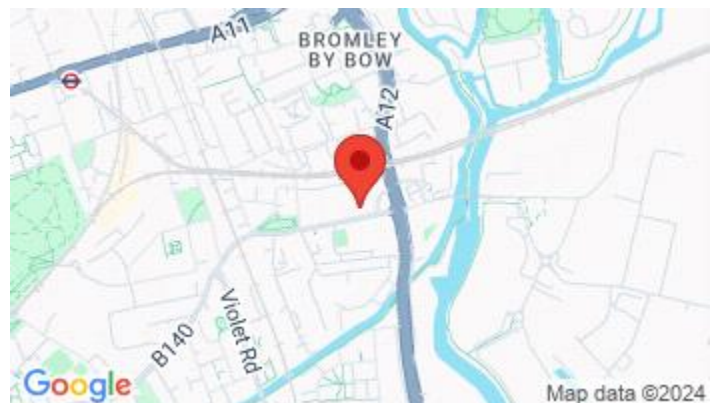




HARSTON WALK, BOW, E3  
£1,700 PCM

Energy Efficiency Rating		
	Current	Potential
Very energy efficient - lower running costs		
(92-100) <b>A</b>		
(81-91) <b>B</b>	82	82
(69-80) <b>C</b>		
(55-68) <b>D</b>		
(39-54) <b>E</b>		
(21-38) <b>F</b>		
(1-20) <b>G</b>		
Not energy efficient - higher running costs		
<b>England &amp; Wales</b>	EU Directive 2002/91/EC	

The energy efficiency rating is a measure of the overall efficiency of a home. The higher the rating the more energy efficient the home is and the lower the fuel bills will be.



Whilst every effort is made to ensure the accuracy of these details, it should be noted that the measurements are approximate only. Floorplans are for representation purposes only and prepared according to the RICS Code of Measuring Practice by our floorplan provider. Therefore, the layout of doors, windows and rooms are approximate and should be regarded as such by any prospective tenant.