



HAMILTON HOUSE, LIMEHOUSE, E14

£3,200 PCM

LET

Three Bedroom Apartment | Split Level Arranged Over The Third & Fourth Floor | Three Bathrooms | Private Balcony | Furnished | Marina Views | 24 Hour Concierge | Residents Gym | Gated Development | Close To Limehouse DLR Station

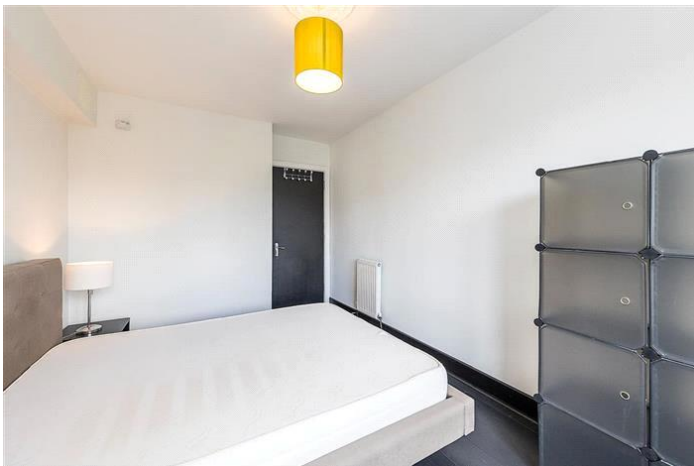
Arranged over the third and fourth floor is this split level, three bedroom, three bathroom apartment that is offered on a furnished basis. The property offers an abundance of space throughout and includes two reception areas, modern fitted kitchen and private balcony with views of Limehouse Marina.

The property is located in Hamilton House which forms part of Victory Place. Victory Place is a gated development off Narrow Street that features a 24 hour concierge and residents gym.

Limehouse DLR station is within a short walk away which provides easy access into the City and Canary Wharf.

Council Tax Band: G

Holding Deposit: £738.46



HAMILTON HOUSE, LIMEHOUSE, E14
£3,200 PCM

| Energy Efficiency Rating | | |
|---|-------------------------|-----------|
| | Current | Potential |
| Very energy efficient - lower running costs | | |
| (92-100) A | | |
| (81-91) B | | |
| (69-80) C | 72 | 79 |
| (55-68) D | | |
| (39-54) E | | |
| (21-38) F | | |
| (1-20) G | | |
| Not energy efficient - higher running costs | | |
| England & Wales | EU Directive 2002/91/EC | |

The energy efficiency rating is a measure of the overall efficiency of a home. The higher the rating the more energy efficient the home is and the lower the fuel bills will be.



Whilst every effort is made to ensure the accuracy of these details, it should be noted that the measurements are approximate only. Floorplans are for representation purposes only and prepared according to the RICS Code of Measuring Practice by our floorplan provider. Therefore, the layout of doors, windows and rooms are approximate and should be regarded as such by any prospective tenant.