



CASPIAN WHARF, BOW, E3

£2,250 PCM

LET

Two Bedroom Apartment | Large Private Terrace | Two Bathrooms | Open Plan Reception Room | Furnished | Floor To Ceiling Windows | 24 Hour Concierge | Close To Devons Road DLR Station

- Furnished
- Private terrace
- Two bathrooms
- Two bedrooms

A spacious and modern two bedroom, two bathroom, furnished apartment that features its own private terrace.

The property comprises entrance hall with storage cupboard, a large open plan reception room with fitted kitchen, access to a huge private terrace, master bedroom with en-suite shower room, second double bedroom and main family bathroom.

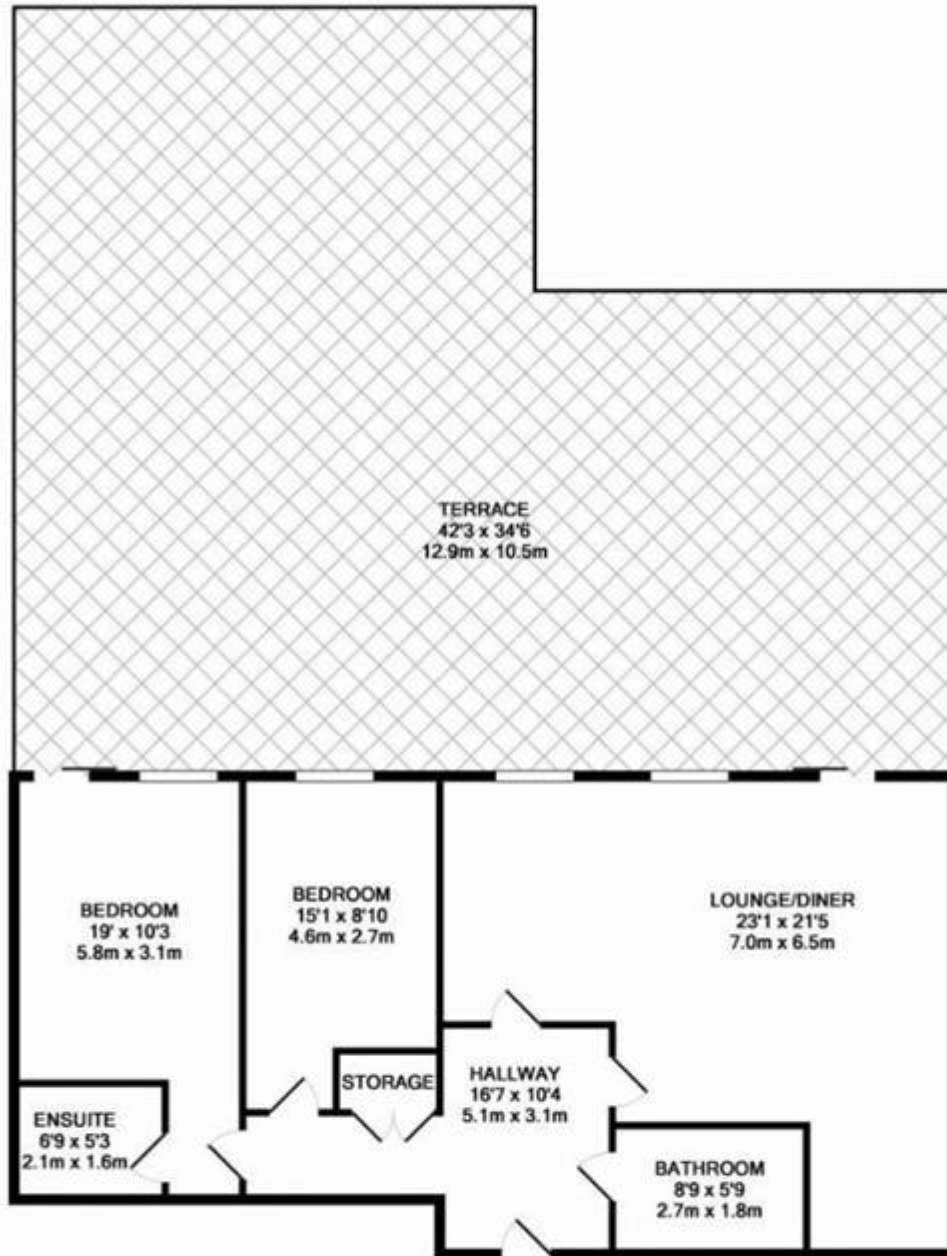
Caspian Wharf is located within close proximity to Canary Wharf and is only a moments' walk to Devon's Road station, with surrounding stations being Langdon Park DLR and Bromley by Bow with the Hammersmith and City Line.

Deposit: £2,884.61

Holding Deposit: £576.92



CASPIAN WHARF, BOW, E3
£2,250 PCM

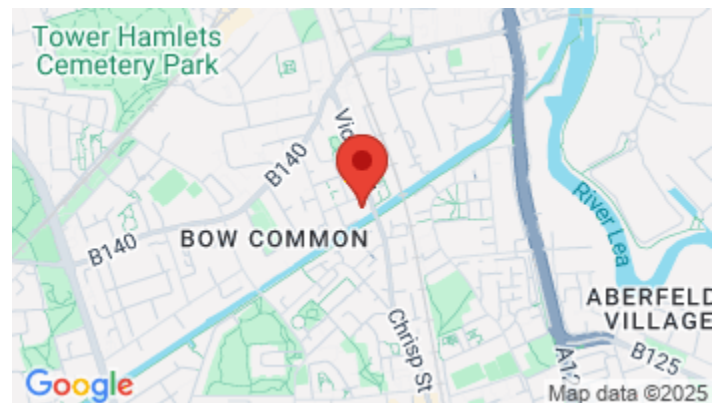


TOTAL APPROX. FLOOR AREA 859 SQ.FT. (79.8 SQ.M.)

Whilst every attempt has been made to ensure the accuracy of the floor plan contained here, measurements of doors, windows, rooms and any other items are approximate and no responsibility is taken for any error, omission, or mis-statement. This plan is for illustrative purposes only and should be used as such by any prospective purchaser. The services, systems and appliances shown have not been tested and no guarantee as to their operability or efficiency can be given
Made with Metropix ©2018

Energy Efficiency Rating		Current	Potential
Very energy efficient - lower running costs			
(92-100) A			
(81-91) B			
(69-80) C		76	77
(55-68) D			
(39-54) E			
(21-38) F			
(1-20) G			
Not energy efficient - higher running costs			
England & Wales		EU Directive 2002/91/EC	

The energy efficiency rating is a measure of the overall efficiency of a home. The higher the rating the more energy efficient the home is and the lower the fuel bills will be.



Whilst every effort is made to ensure the accuracy of these details, it should be noted that the measurements are approximate only. Floorplans are for representation purposes only and prepared according to the RICS Code of Measuring Practice by our floorplan provider. Therefore, the layout of doors, windows and rooms are approximate and should be regarded as such by any prospective tenant.